

**JACK**



## Computerized Lockstitch Machine With Electronic Control Stitch Length System



A4E

**A4E** Computerized Lockstitch Machine With Electronic Control Stitch Length System

# A4E

Item: Computerized Lockstitch Machine With Electronic Control Stitch Length System  
Feature: precise stitchesilent, reverse sewing, various stitch

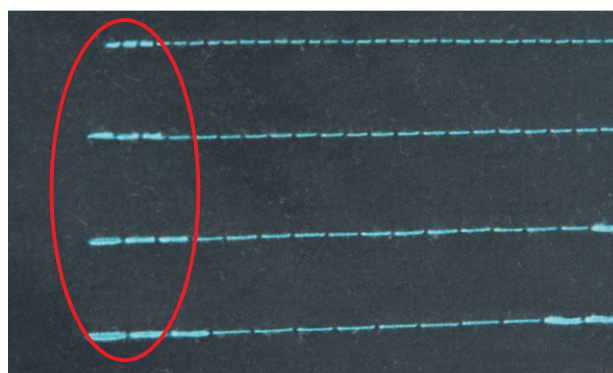


Germany design, Unique image, precise details



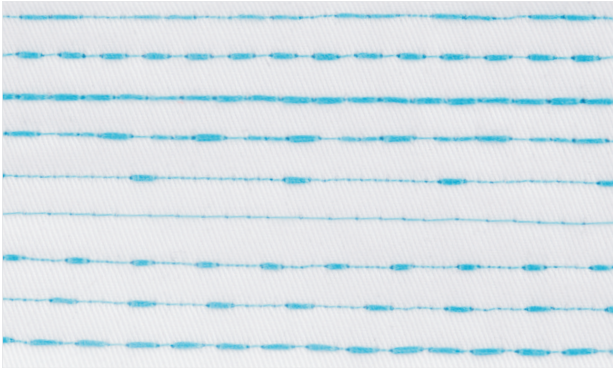
## 1 High precision stitch

stitch length can reach 0.1mm controlled by stepping motor. Stitch length adjustment function can be locked just in case operator's mis-operation.



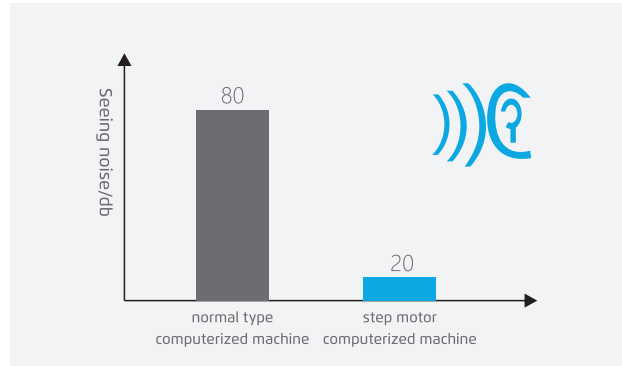
## 2 High stitch overlapping ratio

Overlapping stitch can be perfectly realise in any stitch length, front and back thread remaining lock function is available.



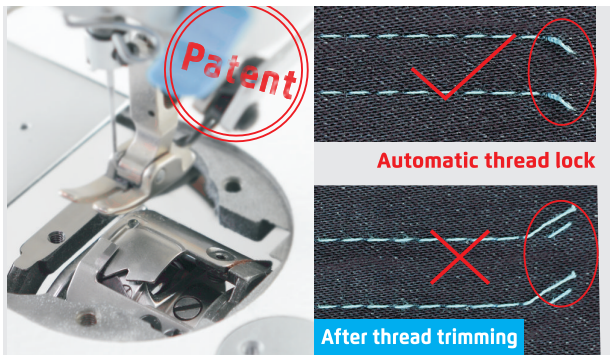
### 3 variable stitches, fashionable and beautiful

Different sewing stitch is available based on different clothes requirements. And editable pattern enables more fashionable and beautiful stitches.



### 4 Noiseless reverse sewing, quiet and comfortable

Stepping motor controlled reverse sewing structure by scientific design achieves noiseless reverse sewing, which enables a quiet and comfortable environment.



### 5 Short thread remaining, no need to trim again

No need to trim thread remaining again, which avoids trimming risks and save labour, time and money.



### 6 Super USB port

Innovated USB port can not only charge phone, but also run fan and upgrade software.

## Specification

Model	Needle	Thread Number	Max Stitch Length (mm)	Presser Foot Lifter Height (mm)	Max Speed (s.p.m)	Thin / medium thick	Thick material	Volume (mm)	Weight (kg)
A4E	DB×1 11-18#	2	5	5-13	5000	√	/	695×295×550	41/47
A4E-H-M	DB×1 11-18#	2	5	5-13	5000	√	/	695×295×550	41/47
A4E-H	DP×5 18-21#	2	5	5-13	3500	√	√	695×295×550	41/47
A4E-CP	DB×1 11-18#	2	5	5-13	5000	√	/	695×295×550	41/47

NOTE: Stand configuration is powermax control box, and Q(Qixing) control box is also available. Japanese hook, auto trimmer, auto reverse sewing, auto presser foot lifter, electronic tension post, 5mm stitch length, 7mm stitch length is optional, P means multiples of 1.6 hook



**Not sure which machine is best for you?  
Contact us for a free consult. We would love to help.**

**SQUARE DEAL SEWING MACHINES CC**

190 Voortrekker Rd, Maitland, Cape Town, 7405  
TEL: 021 510 5150

E-mail: [info@sewingmachine.co.za](mailto:info@sewingmachine.co.za)  
[www.sewingmachine.co.za](http://www.sewingmachine.co.za)